

Bobcat™ 265 Air Pak™

Gas Engine-Driven Welder 

Quick Specs

Industrial Applications

Fabrication
Maintenance
Repair
Structural steel work
Sheet metal
Pipe

Processes

Stick (SMAW)
MIG (GMAW)*
Flux-cored (FCAW)*
DC TIG (GTAW)
Air carbon arc (CAC-A)
cutting and gouging (3/16 in. carbons)
Air plasma cutting and gouging
with optional Spectrum® models

*With wire feeder.

Output Range DC stick 20–265 A
MIG/flux-cored 14–30 V
DC TIG 20–265 A

Auxiliary Power Output Rated at 104°F (40°C)
11,000 watts peak, 9,500 watts continuous

Air Compressor 30 cfm, 100% duty cycle, 80–160 psi

Battery Charge/Crank Assist

Battery charge 12/24 V, 150 A
Crank assist 12/24 V, 300 A

Powerful all-in-one tool designed for repair and construction with multiprocess weld quality, auxiliary power, air compressor and battery charge/crank assist.

The most popular engine-driven welder in the industry, the Bobcat is:

- Quiet to operate
- Small and light
- Easy to maintain



Easy to use

Digital interface speeds machine setup and makes it less complicated.



Separate weld and auxiliary power

Full auxiliary power at any setting.



NEW!



Exceptional arc performance
Easy arc starts and less spatter.



Easier mobility and uses less truck space and payload



Easy maintenance

With its intuitive design, the daily maintenance of our Bobcat engine-driven welder is fast and easy.



Rotary screw compressor
Quiet and durable compressor delivers 30 cfm at 80–160 psi of air at 100% duty cycle.



Engine-driven welder/air compressor/battery charger is warrantied for three years, parts and labor. Engine is warrantied separately by the engine manufacturer.



Miller Electric Mfg. LLC

An ITW Welding Company
1635 West Spencer Street
P.O. Box 1079
Appleton, WI 54912-1079 USA

Equipment Sales US and Canada

Phone: 866-931-9730
FAX: 800-637-2315
International Phone: 920-735-4554
International FAX: 920-735-4125

MillerWelds.com



The Bobcat™ Advantage

Battery charge/crank assist

Reduce downtime with battery charge/crank assist capability. Designed and recommended for mechanics or anyone else responsible for a fleet of trucks or equipment. By using your Bobcat to charge dead batteries or jump a stubborn engine, you'll keep your crew working and the fleet up and running.

Note: Battery charge/jump cables (300422) must be ordered separately.



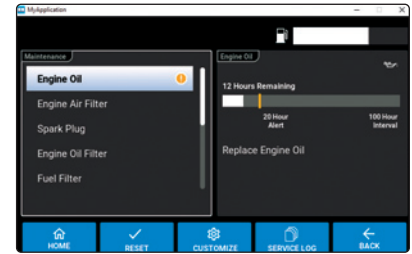
Auto-Set™ technology

Auto-Set offers predefined weld settings to increase ease of use and ensure that the job is done right for operators of all skill levels.



Data visibility

Predictive maintenance information helps you plan necessary service time. Productivity screens make it easier for you to monitor machine use.



Industrial rotary-screw air compressor

Runs most air impact wrenches at idle and gives 100 percent deliverable air. Produces 30 cfm of air at 100 percent duty cycle and delivers 80–160 psi of air with no storage tank. Provides four convenient air compressor access points. The air outlet connection requires a 1/2-inch NPT swivel fitting. Compressor is warranted by Miller for three years.



Direct spool gun connection

Make it easy to weld aluminum. Expand the types of jobs you can take on. Adapters are no longer required with the integrated 10-pin connection. Optimized for Spoolmate™ and Spoolmatic® spool guns.



The Bobcat™ Advantage

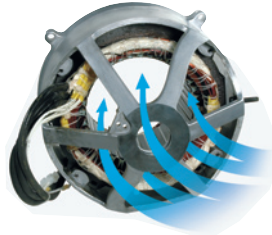
Long runtimes

Large 11-gallon fuel capacity means many hours of run time before refueling. Improved fuel system design reduces a no-start condition if overfilled.

Designed for reliability

From Appleton, Wisconsin USA, our engine-driven welders are the most rugged, durable and long-lasting in the industry. We manufacture them to exceed requirements for extreme working conditions and they are hard-working from the core with:

- Copper windings and robust internal components for a quality-built machine
- Lugged — not soldered — heavy internal leads for better field durability
- Superior cooling technology for maximum performance and engine life
- Protective doors to cover the weld studs and receptacles as required by OSHA and CSA for jobsite safety
- Lift hook integrated into the center frame, which bolts to the machine's base for greater durability



Typical equipment power usage

Bobcat engine-driven welders will easily start and run the following:

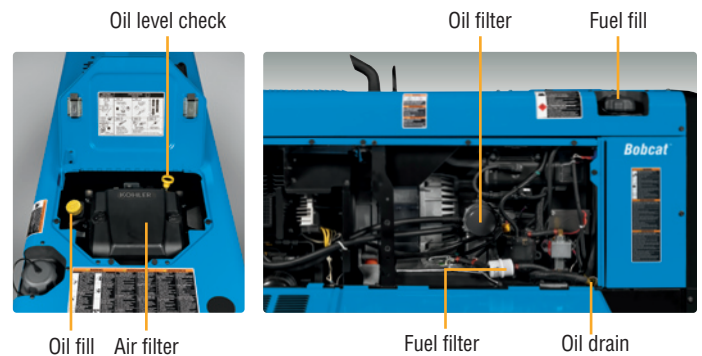
Equipment	Starting Watts	Running Watts
Barn Cleaner (5 hp)	11,600	3,000
Silo Unloader (5 hp)	12,200	4,300
Portable Conveyor (1/2 hp)	3,400	1,000
Milker (5 hp)	10,500	2,800
Hand Drill (1/2 inch)	600	600
Circular Saw (8-1/4 inch)	1,400	1,400
Air Compressor (1-1/2 hp)	8,200	2,200
Flood Lights (Vapor)	1,250	1,000
Spectrum® 625 X-TREME™ (30 A, 230 V, 1/2-inch cut)	6,900	6,900

To size a unit that has enough power output in watts, add the watts for the items you want to simultaneously run. Tools with induction motors may require three to seven times the listed wattage when starting. **All data listed is approximate — check your tool for specific wattage requirements.**

Easy maintenance

With its intuitive design, the daily maintenance of our Bobcat engine-driven welders is fast and easy. Front panel maintenance displays help you know when your equipment needs to be serviced. And servicing is simple because of:

- Oil checks that can be performed easily through the top of the machine by the access door
- Toolless panels that allow for quick access
- Single-side fuel fill and oil drain/filter



Reversed air flow for optimized cooling

Exclusive engine and interior componentry design operates cooler and more efficiently. The engine is rotated towards the front to create more efficient airflow. More efficient airflow and exclusive engine location are significant contributors to reduced sound level and size reduction. Hot air recirculation is eliminated when machine is mounted in tight spots, and internal parts are kept cool for optimal performance.



Specifications (Subject to change without notice.)



Welding Mode	Process	Amp/Volt Ranges	Rated Weld Output at 104°F (40°C)*	Single-Phase Auxiliary Power	Sound Levels at 7 m (23 ft.)	Dimensions	Net Weight**
CC/DC	Stick/TIG	20–265 A	244 A at 29.8 V, 100% duty cycle	Peak 11,000 watts Continuous 9,500 watts	Weld 150 A load: 69.5 dB (94.7 Lwa) 265 A load: 75.3 dB (100.6 Lwa)	H: 27 in. (686 mm) H: 31 in. (787 mm) (to top of exhaust) W: 20.46 in. (520 mm) D: 51.88 in. (1,318 mm)	570 lb. (258.5 kg)
CV/DC	MIG/FGAW	14–30 V	260 A at 27 V, 100% duty cycle				
Battery charge/crank assist		12/24 V	Charge: 150 A Crank assist: 300 A				

*Rated at sea level. **Net weight without fuel.



Certified by Canadian Standards Association to both the Canadian and U.S. Standards.

Air Compressor Specifications

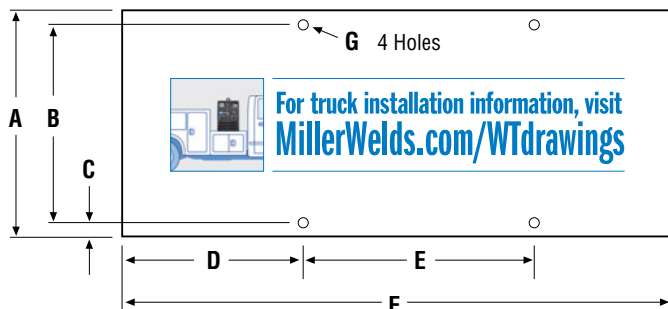
Compressor Brand and Warranty	Features	Free Air Delivery	Working Pressure Constant	Duty Cycle	Oil Capacity	Automatic Compressor Shutdowns
Rotorcomp, 3-year warranty	Rotary screw with electric clutch for on/off, oil change intervals 500 hours	30 cfm (0.85 m ³ /min.) at 3,600 rpm 28 cfm (0.79 m ³ /min.) at 3,000 rpm	80–160 psig	100%	1.75 qt. (1.7 L)	High pressure (160 psi)

Engine Specifications (Engines warranted separately by the engine manufacturer.)

Engine Brand and Warranty	Horsepower (HP)	Type	Weld Speed	Idle Speed	Fuel Capacity	Oil Capacity	Standard Shutdowns
Kohler CH749, 3-year warranty	27 hp at 3,600 rpm	Twin-cylinder, four-cycle overhead valve, air-cooled industrial gasoline* engine	3,600 rpm	2,400 rpm	11 gal. (41.6 L)	1.75 qt. (1.7 L)	Low oil pressure

*Fuel stabilizer is recommended for gas engines that are used infrequently.

Mounting Specifications



Front Panel

- A. 20.46 in. (520 mm)
- B. 16.5 in. (419 mm)
- C. 1.72 in. (44 mm)
- D. 16.16 in. (410 mm)
- E. 24 in. (610 mm)
- F. 51.88 in. (1,318 mm)
- G. .406 in. (10.3 mm) diameter

Small, light design

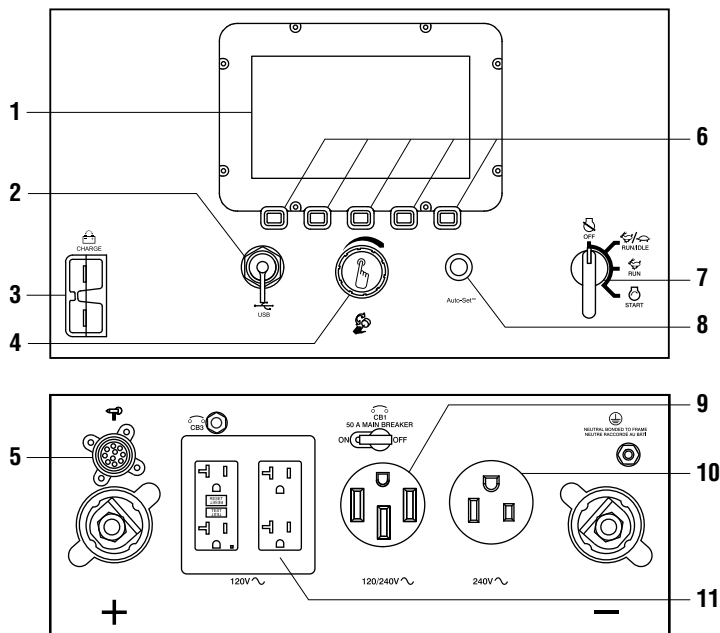
Bobcat engine-driven welders take up less space on trucks and trailers — leaving more room on your truck for other equipment and tools. Plus, they're easier to move around jobsites — even with weld cables attached.



Choose the Right Bobcat™ Air Pak™ or Trailblazer® Air Pak™ Engine Drive

Fuel System	Bobcat 200 Air Pak	UPGRADE	Bobcat 265 Air Pak	UPGRADE	Trailblazer 330 Air Pak
Fuel Type	Gasoline		Gasoline		Gasoline
Weld					
Output	DC only, CC/CV		DC only, CC/CV		DC only, CC/CV
Processes	Stick / MIG / FCAW	➔	Stick / TIG / MIG / FCAW / Gouge		Stick / TIG / MIG / FCAW / Gouge
Amperage Range	20–230 A	➔	20–265 A	➔	20–330 A
Voltage Range	14–25 V	➔	14–30 V	➔	15–40 V
Auxiliary Power					
Peak Watts	8,000 watts	➔	11,000 watts	➔	12,000 watts
Continuous Watts	6,500 watts	➔	9,500 watts	➔	10,500 watts
Dimensions					
Size (H x W x D)	24.25 x 20 x 44.61 in.		27 x 20.46 x 51.88 in.		27 x 20.46 x 51.88 in.
Weight	514 lb.		570 lb.		587 lb.
Key Features					
Display	Segmented digital	➔	LCD		LCD
Maintenance	Fuel / hour / oil	➔	Predictive maintenance		Predictive maintenance
Auto-Set™	—	➔	Yes		Yes
Battery Charge / Crank Assist	100 A charge / 300 A crank	➔	150 A charge / 300 A crank	➔	150 A charge / 300 A crank
ArcReach®	—		—	➔	Yes (standard)
Spool Gun	Direct connect		Direct connect		Direct connect
Remote Start/Stop	—		—	➔	Wireless interface control (option)
Compressor					
Type	Rotary screw		Rotary screw		Rotary screw
Air Rating	30 cfm at 175 psi		30 cfm at 160 psi		30 cfm at 160 psi
Working Pressure	80–175 psi		80–160 psi		80–160 psi

Function and Benefit Guide



- Digital display** provides weld process and parameters, fuel level, maintenance and machine use information.
- USB port** allows software updates from a USB drive. A summary file of recorded data from the unit will be saved to a USB drive that is inserted.
- Battery charge/crank assist receptacle.**
- Pushbutton main control knob** used for adjusting amperage/voltage and accessing the service menu.
- Standard 10-pin receptacle** for simple connection of spool guns. See page 7.
- Pushbuttons** used for selection of weld process, menu and other machine features.
- Engine control switch** is used to start the engine and then select between auto idle and high speed lock positions.
- Auto-Set™ button** provides process-specific pre-defined parameters.
- 120/240 V receptacle with circuit breaker.**
(For matching plug, order **119172**.)
- 240 V receptacle with circuit breaker.**
- 120 V GFCI receptacles with circuit breaker.**

Genuine Miller® Options

Electric Fuel Pump 301741 Field
Recommended for gas engine operations at altitudes above 5,000 feet. Improves engine starting and high-output performance.
Note: Factory-installed.

Spark Arrestor 300924 Field
Mandatory when operating on California grasslands, brush or forest-covered land, and all national forests. For other areas, check your state and local laws.

Cold Weather Kit 301747 Field
Includes compressor oil sump and control block heaters.



Air Cooler with Separator 301749
Cools and removes moisture from the air supply. *Designed for use above 32 degrees Fahrenheit (0°C). Bypass in colder temperatures.*

Micron Filter Element 203877 Field
Replacement micron filter for the Air Cooler with Separator.



RTI Filter and Bracket 300491 Field
Dryer will remove water, dirt and oil as small as one micron with 99.9 percent efficiency. Can be mounted on plasma cutter or on wall. Install as close as possible to point of air consumption.
Designed for use above 32 degrees Fahrenheit (0°C). Bypass in colder temperatures.



Female Receptacle



Full KVA Adapter Cord 300517 Field
NEMA 14-50P to NEMA 6-50R. Adapts engine drive 120/240 V plug to common Millermatic® and Spectrum® 240 V plug.



Full KVA Plug 119172 Field
120/240 V, 50 A plug (NEMA 14-50P) to fit full KVA receptacle.

Engine Tune-Up Kit 294669 Field. Kohler CH749
Includes air and fuel filters, and two spark plugs.

Air Compressor Tune-Up Kit 279120 Field
Includes oil filter, air filter and oil separator.

Genuine Miller® Accessories



25-foot Battery Charge/Jump Cables with Plug 300422



Protective Cover 301730
Heavy-duty, water- and mildew-resistant covers protect and maintain the finish of the welder.

MIG/Flux-cored Welding



Millermatic® 142 907838

See literature DC/12.41

Millermatic® 211 907614

See literature DC/12.58

The Millermatic line of MIG welders are complete arc welding power source, wire feeder and gun packages designed for portability and ease of use.

Note: The Millermatic machines can be operated utilizing auxiliary power.



ArcReach® SuitCase® 8

951726001 With Bernard® BTB Gun 300 A

951727 With Bernard® S-Gun™

951728 With Bernard® Dura-Flux™ gun

ArcReach® SuitCase® 12

951729001 With Bernard® BTB Gun 300 A

951730 With Bernard® S-Gun™

951731 With Bernard® Dura-Flux™ gun

Portable feeder designed to run off of arc voltage.

See literature M/6.55.

Genuine Miller® Accessories (Continued)

MIG/Flux-cored Welding (cont.)



Spoolmatic® 30A Spool Gun 130831
Rated at 200 amps, 100 percent duty cycle with 30-foot (9 m) cable. See literature M/1.73.



Spoolmate™ 200 Spool Gun 300497
Rated at 160 amps, 60 percent duty cycle with 20-foot (6 m) cable. See literature M/1.47.

Stick (SMAW) Welding

Weld Leads

2/0 Stick Cable Set, 50 ft. (15 m) 173851
Consists of 50-foot (15 m) 2/0 electrode cable with holder, and 50-foot (15 m) work cable with clamp. 350 A, 100% duty cycle.

2/0 Stick Cable Set, 100/50 ft. (30.5/15 m) 043952

Consists of 100-foot (30.5 m) 2/0 electrode cable with holder, and 50-foot (15 m) work cable with clamp. 300 A, 100% duty cycle.

TIG (GTAW) Welding



Dynasty® 210 Series
For portable AC/DC TIG. See literature AD/4.81.

Multiprocess Welding



Multimatic® 215 907693
Portable, all-in-one multiprocess package weighs only 38 pounds (17.2 kg), and features excellent arc characteristics. Exclusive multi-voltage plug (MVP™) provides flexibility to plug into 120- or 240-volt power. Take it anywhere you need to MIG, TIG or stick weld. See literature DC/12.59.

Remote Solutions

Remote Output Panel Kit 951850
If your engine-driven welder is mounted on a truck, easily locate the outputs at the point of use with the auxiliary power and weld output remote panel. See literature AY/20.5.

Plasma Cutting



Spectrum 375 X-TREME and 625 X-TREME shown.

Spectrum® 375 X-TREME™ 907529
See literature PC/9.2.

Spectrum® 625 X-TREME™ 907579
See literature PC/9.6.

Spectrum® 875 907583
See literature PC/9.8.

The Spectrum 375 X-TREME and 625 X-TREME come complete with protective X-CASE™ (not shown).

Trailers and Hitches



HWY-Mid Frame Trailer 301438
1,424-pound (646 kg) capacity highway trailer with welded steel tubing frame, heavy-duty axle with roller bearing hubs and leaf-spring suspension. Includes jack stand, fenders, lights, and dual hitch with 2-inch (50 mm) ball hitch and 3-inch (76 mm) lunette eye.
Note: Trailer is shipped unassembled.



Cable Tree 043826
Provides an area to conveniently wrap weld cables and extension cords.



2-In-1 Document/Fire Extinguisher Holder 301236
Stores documents and holds a five-pound fire extinguisher.

Note: Holder shown mounted on trailer. Fire extinguisher not included.

Ordering Information

Equipment and Options	Stock No.	Description	Qty.	Price
Bobcat™ 265 Air Pak™ (Kohler engine)	907876	With battery charge/crank assist		
Field Options <i>Options listed below can be added to the above packages. Installation is required.</i>				
Electric Fuel Pump	301741	Recommended for gas engine operations at altitudes above 5,000 feet. <i>Factory-installed</i>		
Spark Arrestor	300924			
Cold Weather Kit	301747	Includes compressor oil sump and control block heaters		
Air Cooler with Separator	301749			
Micron Filter Element	203877	For use with air cooler with separator		
RTI Filter and Bracket	300491			
Full KVA Adapter Cord	300517			
Full KVA Plug	119172			
Engine Tune-Up Kit	294669	For Kohler CH749. Includes air and fuel filters, and two spark plugs		
Air Compressor Tune-Up Kit	279120	Includes oil filter, air filter and oil separator		
Accessories				
25-foot Battery Charge/Jump Cables w/Plug	300422			
Protective Cover	301730			
MIG/Flux-cored Welding				
Millermatic® Series MIG Welders		See page 6		
ArcReach® SuitCase® Wire Feeders		See page 6		
Spoolmatic® 30A Spool Gun	130831	See literature M/1.73		
Spoolmate™ 200 Spool Gun	300497	See literature M/1.47		
Stick Welding				
		See page 7		
TIG Welding				
		See page 7		
Multiprocess Welding				
		See page 7		
Remote Solutions				
		See page 7		
Plasma Cutting				
		See page 7		
Trailers and Hitches				
HWY-Mid Frame Trailer	301438	Trailer with lights, fenders and dual hitch. For highway use		
Cable Tree	043826	Trailer-mounted cable holder		
2-In-1 Document/Fire Extinguisher Holder	301236	Stores documents and holds a five-pound fire extinguisher		

Date:

Total Quoted Price:

Distributed by:



KRISTIAN
ELECTRIC LTD

CALGARY - EDMONTON - SASKATOON
www.kristian.ca



Miller

The Power of Blue®