

Weldcraft™ A-200 Series

Formerly WP-26 Series

Hand-Held Air-Cooled
TIG Welding Torches



Quick Specs

Models

A-200
A-200 Valve
A-200 Flex
A-200 Flex Valve

A-200 Flex Redhead™
A-200 Flex Valve Redhead™

Applications

Fabrication
Maintenance and repair
Manufacturing
Shipbuilding
Vocational

Rated Output

DC: 200 A, AC: 150 A

Duty Cycle 60%

Electrode Range

.020–5/32 in. (0.5–4.0 mm)

A-200 Series TIG torches

Formerly known as the WP-26 Series, the A-200 Series consists of dependable, top-performing air-cooled torches designed for heavy-duty welding applications.

Eliminate the expense of a water-cooled system. The air-cooled capability pairs reliability with cost-effectiveness for all field applications.

Robust performance. The heavy copper construction delivers optimal welding capacity for rugged fieldwork.

Effortless adjustments. The A-200 Valve provides a gas control valve to ensure a quick, easy adjustment of shielding gas flow.

Flexibility. Using the A-200 Flex, the flexible neck easily adjusts to any angle for better torch control in limited-access joints.

Combining the flexible neck and gas valve advances capabilities with greater comfort and control (A-200 Flex Valve).

Maximum versatility. Utilize the Redhead Series torches in a variety of welding applications without adding expenses.

Note: Torches delivered may vary slightly from images shown.



A-200
(WP-26)



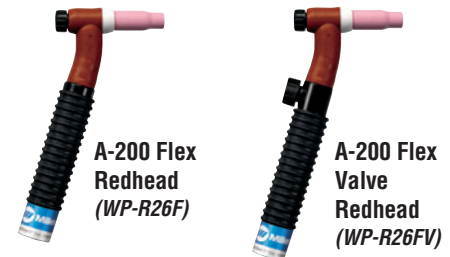
A-200 Valve
(WP-26V)

Additional torch models



A-200 Flex
(WP-26F)

A-200 Flex Valve
(WP-26FV)



A-200 Flex Redhead
(WP-R26F)

A-200 Flex Valve Redhead
(WP-R26FV)



Miller Electric Mfg. Co.
An ITW Welding Company
1635 West Spencer Street
P.O. Box 1079
Appleton, WI 54912-1079 USA

Equipment Sales US and Canada
Phone: 866-931-9730
FAX: 800-637-2315
International Phone: 920-735-4554
International FAX: 920-735-4125

MillerWelds.com



Torch Packages

| Models | | 1-Piece Power Cable Standard Rubber | | 2-Piece Power Cable Rubber | |
|-----------|---------------------------|--|----------------|-------------------------------|----------------|
| Old Model | New Name | 12.5 ft. (3.8 m) | 25 ft. (7.6 m) | 12.5 ft. (3.8 m) | 25 ft. (7.6 m) |
| WP-26 | A-200 | WP-26-12-R | WP-26-25-R | WP-26-12-2 | WP-26-25-2 |
| WP-26V | A-200 Valve | WP-26V-12-R | WP-26V-25-R | WP-26V-12-2 | WP-26V-25-2 |
| WP-26F | A-200 Flex | WP-26F-12-R | WP-26F-25-R | WP-26F-12-2 | WP-26F-25-2 |
| WP-26FV | A-200 Flex Valve | WP-26FV-12-R | WP-26FV-25-R | WP-26FV-12-2 | WP-26FV-25-2 |
| WP-R26F | A-200 Flex Redhead™ | WP-R26F-12-R | — | — | WP-R26F-25-2 |
| WP-R26FV | A-200 Flex Valve Redhead™ | — | WP-R26FV-25-R | — | — |

V = Valve F = Flex FV = Flex Valve

Torch packages include torch body, handle, power cable and long back cap.

Connectors

1-piece power cable connectors



194723
50 mm Dinse-style gas thru
for one-piece air-cooled torch.



195379
50 mm Dinse-style for
one-piece air-cooled torch.



45V62
Power cable adapter for
one-piece air-cooled torch.

2-piece power cable connector

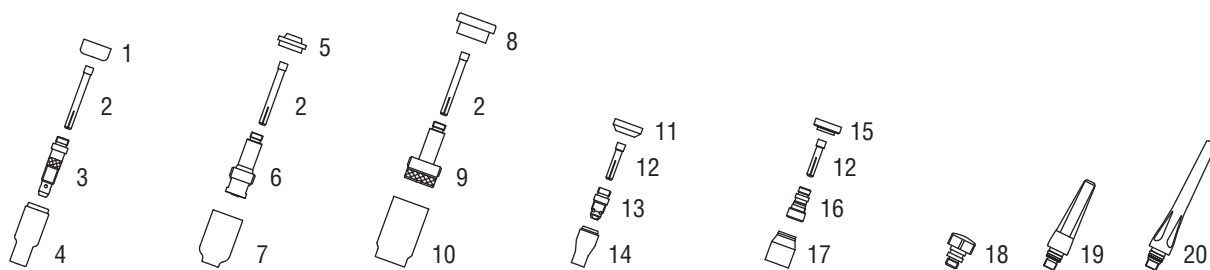


129527
50 mm Dinse-style for two-piece
cable air-cooled torch.

| Machines | Connection Type | 1-Piece Power Cable Connectors | 2-Piece Power Cable Connectors |
|--|-----------------------------|--------------------------------|--------------------------------|
| TIG Machines | | | |
| Syncrowave® 200/210 | 50 mm Dinse-style gas thru | 194723 | 129527* |
| Syncrowave® 250 DX/350 DX (Dinse) | 50 mm Dinse-style | 195379 | 129527 |
| Syncrowave® 250 DX/350 DX (stud) | 1/2 in. stud | 45V62 | N/A |
| Dynasty® 200/210/280/350, Maxstar® 200/210/280/350 | 50 mm Dinse-style | 195379 | 129527 |
| Multiprocess Machines | | | |
| Dimension™ 302/452/NT 450/652 | 1/2 in. stud | 45V62 | N/A |
| PipeWorx | 1/2 in. stud | 45V62 | N/A |
| XMT® 304/350 | 50 mm Dinse-style | 195379 | 129527 |
| XMT® 450 | 1/2 in. stud | 45V62 | N/A |
| Engine-Driven Machines | | | |
| Most Big Blue®, Trailblazer®, Bobcat™, Blue Star® and Wildcat® models | 1/2 in. stud | 45V62 | N/A |
| Big Blue® 450 Duo CST | 50 mm Dinse-style | 195379 | 129527 |
| General Reference | | | |
| | 50 mm Dinse-style | 195379 | 129527 |
| | 50 mm Dinse-style gas thru | 194723 | N/A |
| | 1/2 in. stud | 45V62 | N/A |
| Other Adapter | | | |
| | Stud to dinse-style adapter | 232728 | |

*2-piece power cable connector is not gas thru.

Consumables (Refer to Owner's Manual for additional replacement parts.)



| Non-Gas Lens | | | | | | | | |
|------------------------------------|-------------------|-------------------|-------------------|-------------------|------------------|-------------------|-----------------|--------------|
| Electrode Size — inch (mm) | .020 (0.5) | .040 (1.0) | 1/16 (1.6) | 3/32 (2.4) | 1/8 (3.2) | 5/32 (4.0) | | |
| 1 Insulator (required) | 18CG | 18CG | 18CG | 18CG | 18CG | 18CG | 18CG | 18CG |
| 2 Collet | 10N21 | 10N22 | 10N23 | 10N24 | 10N25 | 10N25 | 54N20 | 54N20 |
| 3 Collet Body | 10N29 | 10N30 | 10N31 | 10N32 | 10N28 | 10N28 | 406488 | 406488 |
| Nozzle Size — size # (inch) | 4 (1/4) | 5 (5/16) | 6 (3/8) | 7 (7/16) | 8 (1/2) | 10 (5/8) | 12 (3/4) | Short |
| 4 Alumina | 10N50 | 10N49 | 10N48 | 10N47 | 10N46 | 10N45 | 10N44 | — |
| * Long Alumina | — | 10N49L | 10N48L | 10N47L | — | — | — | — |
| * Lava | 105Z43 | 105Z42 | 105Z44 | 105Z45 | 08N78 | 08N79 | 08N80 | — |
| * Long Lava | 12N03 | 105Z60 | 12N02 | 105Z61 | — | — | — | — |
| Gas Lens | | | | | | | | |
| Electrode Size — inch (mm) | .020 (0.5) | .040 (1.0) | 1/16 (1.6) | 3/32 (2.4) | 1/8 (3.2) | 5/32 (4.0) | | |
| 5 Insulator (required) | 54N01 | 54N01 | 54N01 | 54N01 | 54N01 | 54N01 | 54N01 | 54N01 |
| 2 Collet | 10N21 | 10N22 | 10N23 | 10N24 | 10N24 | 10N25 | 54N20 | 54N20 |
| 6 Gas Lens | 45V29 | 45V24 | 45V25 | 45V26 | 45V26 | 45V27 | 45V28 | 45V28 |
| Nozzle Size — size # (inch) | 4 (1/4) | 5 (5/16) | 6 (3/8) | 7 (7/16) | 8 (1/2) | 10 (5/8) | 12 (3/4) | Short |
| 7 Alumina Gas Lens | 54N18 | 54N17 | 54N16 | 54N15 | 54N14 | — | — | 54N19 |
| * Long Gas Lens | — | 54N17L | 54N16L | 54N15L | — | — | — | — |
| Large Diameter Gas Lens | | | | | | | | |
| Electrode Size — inch (mm) | .020 (0.5) | .040 (1.0) | 1/16 (1.6) | 3/32 (2.4) | 1/8 (3.2) | 5/32 (4.0) | | |
| 8 Insulator (required) | 54N63 | 54N63 | 54N63 | 54N63 | 54N63 | 54N63 | 54N63 | 54N63 |
| 2 Collet | 10N21 | 10N22 | 10N23 | 10N24 | 10N24 | 10N25 | 54N20 | 54N20 |
| 9 Large Diameter Gas Lens | 45V0204 | 45V0204 | 45V116 | 45V64 | 45V64 | 995795 | 45V63 | 45V63 |
| Nozzle Size — size # (inch) | 4 (1/4) | 5 (5/16) | 6 (3/8) | 7 (7/16) | 8 (1/2) | 10 (5/8) | 12 (3/4) | Short |
| 10 Large Dia. Gas Lens | — | — | 57N75 | — | 57N74 | 53N88 | 53N87 | 53N89 |
| * Large Dia. Gas Lens-L | — | — | 57N75L | — | 57N74L | 53N88L | 53N87L | — |
| * Large Dia. Gas Lens-XL | — | — | 57N75XL | — | 57N74XL | 53N88XL | 53N87XL | — |
| * Large Dia. Gas Lens-XXL | — | — | 57N75XXL | — | 57N74XXL | 53N88XXL | 53N87XXL | — |
| Stubby Non-Gas Lens | | | | | | | | |
| Electrode Size — inch (mm) | .020 (0.5) | .040 (1.0) | 1/16 (1.6) | 3/32 (2.4) | 1/8 (3.2) | | | |
| 11 Insulator (required) | 18CG20 | 18CG20 | 18CG20 | 18CG20 | 18CG20 | 18CG20 | 18CG20 | 18CG20 |
| 12 Stubby Collet | — | 10N22S | 10N23S | 10N23S | 10N24S | 10N24S | 10N25S | 10N25S |
| 13 Stubby Collet Body | 17CB20 | 17CB20 | 17CB20 | 17CB20 | 17CB20 | 17CB20 | 17CB20 | 17CB20 |
| Nozzle Size — size # (inch) | 4 (1/4) | 5 (5/16) | 6 (3/8) | 7 (7/16) | 8 (1/2) | 10 (5/8) | 12 (3/4) | Short |
| 14 Stubby Alumina | 13N08 | 13N09 | 13N10 | 13N11 | 13N12 | 13N13 | — | — |
| Stubby Gas Lens | | | | | | | | |
| Electrode Size — inch (mm) | .020 (0.5) | .040 (1.0) | 1/16 (1.6) | 3/32 (2.4) | 1/8 (3.2) | | | |
| 15 Insulator (required) | 17GLG20 | 17GLG20 | 17GLG20 | 17GLG20 | 17GLG20 | 17GLG20 | 17GLG20 | 17GLG20 |
| 12 Stubby Collet | — | 10N22S | 10N23S | 10N23S | 10N24S | 10N24S | 10N25S | 10N25S |
| 16 Stubby Gas Lens | — | 17GL040 | 17GL116 | 17GL116 | 17GL332 | 17GL332 | 17GL18 | 17GL18 |
| Nozzle Size — size # (inch) | 4 (1/4) | 5 (5/16) | 6 (3/8) | 7 (7/16) | 8 (1/2) | 10 (5/8) | 12 (3/4) | Short |
| 17 Alumina Gas Lens | 53N58 | 53N59 | 53N60 | 53N61 | 53N61S | — | — | — |
| Back Caps | | | | | | | | |
| 18 Short | 57Y04 | 19 Medium | 300M | 20 Long | 57Y02 | | | |

*Not shown.

Tungsten

Tungsten for the most demanding TIG welding applications!

Available in four types and industry-standard diameters, our line of Weldcraft™ tungsten electrodes has undergone rigorous testing to ensure the highest quality and durability. Color-coded packages include ten 7-inch (175 mm) tungsten electrodes.

Note: Refer to manufacturer SDS sheets for proper preparation and safety. Use proper ventilation/capture during preparation. Refer to manufacturer warning regarding ventilation.



| Type | Diameter in. (mm) | Part # | Type | Diameter in. (mm) | Part # |
|--|-------------------|-----------------|---|-------------------|----------------|
| 2% Ceriated (EWCe-2) | | | Pure (EWP) | | |
| Performs well in DC welding and arc starting at low-current settings, and offers excellent performance in AC processes. | 0.040 (1.0) | WC040X7 | Forms a clean, balled end when heated and provides good arc stability for AC welding with a balanced or unbalanced squarewave or sine wave. | 0.040 (1.0) | — |
| | 1/16 (1.6) | WC116X7 | | 1/16 (1.6) | WP116X7 |
| | 3/32 (2.4) | WC332X7 | | 3/32 (2.4) | WP332X7 |
| | 1/8 (3.2) | WC018X7 | | 1/8 (3.2) | WP018X7 |
| | 5/32 (4.0) | WC532X7 | | 5/32 (4.0) | — |
| 2% Lanthanated (EWLa-2) | | | Rare Earth (EWG) | | |
| Provides excellent arc starting, arc stability and re-ignition, and less tip erosion in AC or DC welding. Can substitute for 2% Thoriated. | 0.040 (1.0) | WL2040X7 | Combines the best of all alloying elements, and provides excellent arc stability in AC or DC welding. | 0.040 (1.0) | — |
| | 1/16 (1.6) | WL2116X7 | | 1/16 (1.6) | WG116X7 |
| | 3/32 (2.4) | WL2332X7 | | 3/32 (2.4) | WG332X7 |
| | 1/8 (3.2) | WL2018X7 | | 1/8 (3.2) | WG018X7 |
| | 5/32 (4.0) | WL2532X7 | | 5/32 (4.0) | — |

Replacement Parts

| Torch Bodies | | |
|--------------------------------|-------------------------|-----------------------|
| A-200 | | WP-26 |
| A-200 Valve | | WP-26V |
| A-200 Flex | | WP-26F |
| A-200 Flex Valve | | WP-26FV |
| A-200 Redhead™ Flex | | WP-R26F |
| A-200 Redhead™ Flex Valve | | WP-R26FV |
| Handles | | |
| A-200 (ribbed) | | H-200R |
| A-200 Valve (knurled) | | H-200 |
| A-200 Flex (ribbed) | | 10N15R |
| A-200 Flex Valve (knurled) | | 10N15 |
| Valve Knob | | |
| All valve models | | VS-1 |
| Flex Head Only | | |
| A-200 Flex/Flex Valve | | 26F |
| A-200 Redhead™ Flex/Flex Valve | | R26F |
| Power Cables | | |
| | 12.5 ft. (3.8 m) | 25 ft. (7.6 m) |
| 1-Piece Rubber | 46V28R | 46V30R |
| 2-Piece Rubber | 46V28-2 | 46V30-2 |

Genuine Miller® Accessories

Accessory Kit AK3C
Includes one short back cap, one of each size (#5, #6, #8) alumina nozzle, and one of each size (1/16, 3/32, 1/8 inch) of the following: collet, collet body, and 7-inch 2% ceriated tungsten electrode.

Extension Kit EK325R 25 ft. (7.6 m), rubber

Cable Covers
WC-3-10 10 ft. (3 m)
WC-3-22 22 ft. (6.7 m)

Wireless Remote Foot Control 300429
For remote current and contactor control. Receiver plugs directly into the 14-pin receptacle of Miller machine. 90-foot (27.4 m) operating range.

Wireless Remote Hand Control 300430
For remote current and contactor control. Receiver plugs directly into the 14-pin receptacle of Miller machine. 300-foot (91.4 m) operating range.

RCC-14 Remote Contactor and Current Control 151086
East/west rotary-motion fingertip control attaches to TIG torch using two hook-and-loop fasteners. Includes 26.5-foot (8 m) cord with 14-pin plug.

RCCS-14 Remote Contactor and Current Control 043688
North/south rotary-motion fingertip control attaches to TIG torch using two hook-and-loop fasteners. Includes 26.5-foot (8 m) cord with 14-pin plug.

Distributed by:

