

Weldcraft™ A-125 Series

Formerly WP-9 Series

Hand-Held Air-Cooled
TIG Welding Torches



Quick Specs

Models

A-125	A-125 Flex Redhead™
A-125 Valve	A-125 Flex Valve Redhead™
A-125 Flex	A-125 Pencil
A-125 Flex Valve	

Applications

Maintenance and repair
Home/hobby
Metal art/sculpture
Motorsports
Fabrication

Rated Output

DC: 125 A, AC: 100 A

Duty Cycle 60%

Electrode Range

.020–1/8 in. (0.5–3.2 mm)

A-125 Series TIG torches

Formerly known as the WP-9 Series, the A-125 Series torches are designed for optimal control while welding thin-gauge materials, especially in hard-to-reach places. This series offers a variety of configurations suited to diverse welding applications.

The lightweight body reduces fatigue and downtime, and increases operator comfort.

Perfected control. The gas valve in the A-125 Valve offers improved shielding gas control.

Flexibility. Using the A-125 Flex, the flexible neck easily adjusts to any angle for improved torch control.

The pencil-style model without a back cap allows for superior access to confined areas (A-125 Pencil).

Combine the flexible neck and gas valve for welding limited-access joints using power sources without gas solenoids (A-125 Flex Valve).

For maximum versatility on multiple welding applications, without adding expenses, use the A-125 Flex Redhead and A-125 Flex Valve Redhead.

Note: Torches delivered may vary slightly from images shown.



A-125
(WP-9)



A-125 Valve
(WP-9V)

Additional torch models



A-125 Flex
(WP-9F)



A-125 Flex Valve
(WP-9FV)



A-125 Flex Redhead
(WP-R9F)



A-125 Flex Valve Redhead
(WP-R9FV)



A-125 Pencil
(WP-9P)



Miller Electric Mfg. Co.
An ITW Welding Company
1635 West Spencer Street
P.O. Box 1079
Appleton, WI 54912-1079 USA

Equipment Sales US and Canada
Phone: 866-931-9730
FAX: 800-637-2315
International Phone: 920-735-4554
International FAX: 920-735-4125

MillerWelds.com
f t y i n



Torch Packages

Models		1-Piece Power Cable Standard Rubber		2-Piece Power Cable Rubber	
Old Model	New Name	12.5 ft. (3.8 m)	25 ft. (7.6 m)	12.5 ft. (3.8 m)	25 ft. (7.6 m)
WP-9	A-125	WP-9-12-R	WP-9-25-R	WP-9-12-2	WP-9-25-2
WP-9V	A-125 Valve	WP-9V-12-R	WP-9V-25-R	WP-9V-12-2	WP-9V-25-2
WP-9F	A-125 Flex	WP-9F-12-R	WP-9F-25-R	—	—
WP-9FV	A-125 Flex Valve	WP-9FV-12-R	WP-9FV-25-R	WP-9FV-12-2	WP-9FV-25-2
WP-9P	A-125 Pencil	WP-9P-12-R	WP-9P-25-R	—	—

V = Valve F = Flex FV = Flex Valve P = Pencil

Torch packages include torch body, handle, power cable, and long back cap (excluding the A-125 Pencil model).

Connectors

1-piece power cable connectors



194722
50 mm Dinse-style
gas thru for one-piece
air-cooled torch.



195378
50 mm Dinse-style
for one-piece
air-cooled torch.



105257
Power cable adapter
for one-piece
air-cooled torch.



273483
25 mm (small)
Dinse-style gas
thru one-piece
air-cooled torch.

2-piece power cable connector

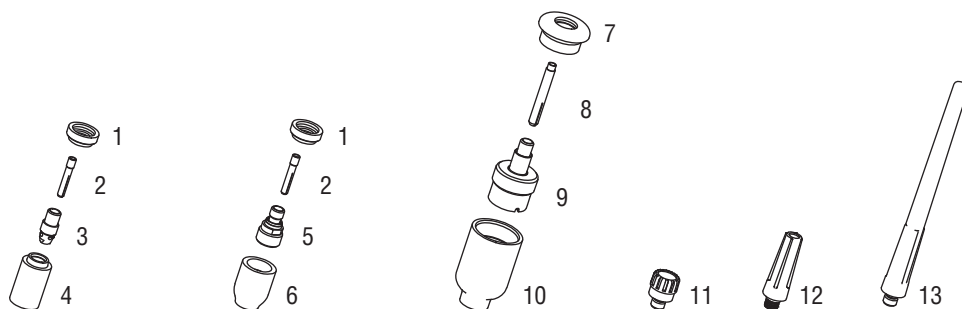


129527
50 mm Dinse-style
for two-piece cable
air-cooled torch.

Machines	Connection Type	1-Piece Power Cable Connectors	2-Piece Power Cable Connectors
TIG Machines			
Syncrowave® 200/210	50 mm Dinse-style gas thru	194722	129527*
Syncrowave® 250 DX/350 DX (Dinse)	50 mm Dinse-style	195378	129527
Syncrowave® 250 DX/350 DX (stud)	1/2 in. stud	105257	N/A
Maxstar® 150 STL/STH	25 mm (small) Dinse-style gas thru	273483	127836*
Dynasty® 200/210/280/350, Maxstar® 200/210/280/350	50 mm Dinse-style	195378	129527
Multiprocess Machines			
Multimatic™ 200	25 mm (small) Dinse-style gas thru	273483	127836*
Dimension™ 302/452/NT 450/652	1/2 in. stud	105257	N/A
PipeWorx	1/2 in. stud	105257	N/A
XMT® 304/350	50 mm Dinse-style	195378	129527
XMT® 450	1/2 in. stud	105257	N/A
Engine-Driven Machines			
Most Big Blue®, Trailblazer®, Bobcat™, Blue Star® and Wildcat® models	1/2 in. stud	105257	N/A
Big Blue® 450 Duo CST	50 mm Dinse-style	195378	129527
General Reference			
	25 mm (small) Dinse-style gas thru	273483	N/A
	50 mm Dinse-style	195378	129527
	50 mm Dinse-style gas thru	194722	N/A
	1/2 in. stud	105257	N/A
Other Adapter			
	Stud to dinse-style adapter	232728	

*2-piece power cable connector is not gas thru.

Consumables (Refer to Owner's Manual for additional replacement parts.)



Non-Gas Lens

Non Gas Torch										
Electrode Size — inch (mm)	.020 (0.5)		.040 (1.0)		1/16 (1.6)		3/32 (2.4)		1/8 (3.2)	
1 Insulator (required)	598882		598882		598882		598882		598882	
2 Collet	13N20		13N21		13N22		13N23		13N24	
3 Collet Body	13N25		13N26		13N27		13N28		13N29	
Nozzle Size — size # (inch)	3 (3/16)	4 (1/4)	5 (5/16)	6 (3/8)	7 (7/16)	8 (1/2)	10 (5/8)	12 (3/4)	Short	
4 Alumina	—	13N08	13N09	13N10	13N11	13N12	13N13	—	—	
* Lava	—	13N14	13N15	13N16	13N17	13N18	13N19	—	—	
* Long Lava	796F70	796F71	796F72	796F73	—	—	—	—	—	
* X-Long Lava	796F74	796F75	796F76	796F77	—	—	—	—	—	

Gas Lens

Electrode Size — inch (mm)	.020 (0.5)		.040 (1.0)		1/16 (1.6)		3/32 (2.4)		1/8 (3.2)	
1 Insulator (required)	598882		598882		598882		598882		598882	
2 Collet	13N20		13N21		13N22		13N23		13N24	
5 Gas Lens	45V41		45V42		45V43		45V44		45V45	
Nozzle Size — size # (inch)	3 (3/16)	4 (1/4)	5 (5/16)	6 (3/8)	7 (7/16)	8 (1/2)	10 (5/8)	12 (3/4)	Short	
6 Alumina Gas Lens	—	53N58	53N59	53N60	53N61	53N61S	—	—	—	

Large Diameter Gas Lens

Electrode Size — inch (mm)	.020 (0.5)		.040 (1.0)		1/16 (1.6)		3/32 (2.4)		1/8 (3.2)	
7 Insulator (required)	54N63-20		54N63-20		54N63-20		54N63-20		54N63-20	
8 Collet	13N20L		13N21L		13N22L		13N23L		13N24L	
9 Large Diameter Gas Lens	45V0204S		45V0204S		45V116S		45V64S		995795S	
Nozzle Size — size # (inch)	3 (3/16)	4 (1/4)	5 (5/16)	6 (3/8)	7 (7/16)	8 (1/2)	10 (5/8)	12 (3/4)	Short	
10 Large Dia. Gas Lens	—	—	—	57N75	—	57N74	53N88	53N87	53N89	
* Large Dia. Gas Lens-L	—	—	—	57N75L	—	57N74L	53N88L	53N87L	—	
* Large Dia. Gas Lens-XL	—	—	—	57N75XL	—	57N74XL	53N88XL	53N87XL	—	
* Large Dia. Gas Lens-XXL	—	—	—	57N75XXL	—	57N74XXL	53N88XXL	53N87XXL	—	

Back Caps

11 Short 41V33	12 Medium 41V35	13 Long 41V24
----------------	-----------------	---------------

*Not shown.

Tungsten

Tungsten for the most demanding TIG welding applications!

Available in four types and industry-standard diameters, our line of Weldcraft™ tungsten electrodes has undergone rigorous testing to ensure the highest quality and durability. Color-coded packages include ten 7-inch (175 mm) tungsten electrodes.

Note: Refer to manufacturer SDS sheets for proper preparation and safety. Use proper ventilation/capture during preparation. Refer to manufacturer warning regarding ventilation.



Type	Diameter in. (mm)	Part #	Type	Diameter in. (mm)	Part #
2% Ceriated (EWCe-2)			Pure (EWP)		
Performs well in DC welding and arc starting at low-current settings, and offers excellent performance in AC processes.	0.040 (1.0)	WC040X7	Forms a clean, balled end when heated and provides good arc stability for AC welding with a balanced or unbalanced squarewave or sine wave.	0.040 (1.0)	—
	1/16 (1.6)	WC116X7		1/16 (1.6)	WP116X7
	3/32 (2.4)	WC332X7		3/32 (2.4)	WP332X7
	1/8 (3.2)	WC018X7		1/8 (3.2)	WP018X7
	5/32 (4.0)	WC532X7		5/32 (4.0)	—
2% Lanthanated (EWLa-2)			Rare Earth (EWG)		
Provides excellent arc starting, arc stability and re-ignition, and less tip erosion in AC or DC welding. Can substitute for 2% Thoriated.	0.040 (1.0)	WL2040X7	Combines the best of all alloying elements, and provides excellent arc stability in AC or DC welding.	0.040 (1.0)	—
	1/16 (1.6)	WL2116X7		1/16 (1.6)	WG116X7
	3/32 (2.4)	WL2332X7		3/32 (2.4)	WG332X7
	1/8 (3.2)	WL2018X7		1/8 (3.2)	WG018X7
	5/32 (4.0)	WL2532X7		5/32 (4.0)	—

Replacement Parts

Torch Bodies		
A-125		WP-9
A-125 Valve		WP-9V
A-125 Flex		WP-9F
A-125 Flex Valve		WP-9FV
A-125 Redhead™ Flex		WP-R9F
A-125 Redhead™ Flex Valve		WP-R9FV
Handles		
A-125 (ribbed)		H-100R
A-125 Valve (knurled)		H-100
A-125 Flex (ribbed)		105Z55R
A-125 Flex Valve (knurled)		105Z55
Flex Head Only		
A-125 Flex/Flex Valve		9F
A-125 Redhead™ Flex/Flex Valve		R9F
Valve Knob		
All valve models		VS-2
Power Cables and Hoses		
	12.5 ft. (3.8 m)	25 ft. (7.6 m)
Rubber	57Y01R	57Y03R
Mono Flex™	57Y01MF	57Y03MF
2-Piece Rubber	57Y01-2	57Y03-2

Genuine Miller® Accessories

Accessory Kit AK1C
Includes one long back cap, one of each size (#4, #5, #6) alumina nozzle, and one of each size (.040, 1/16 inch) of the following: collet, collet body, and 7-inch 2% ceriated tungsten electrode.

Accessory Kit AK-150MFC
Allows welding operators to customize their standard A-150 (WP-17) or A-125 (WP-9) TIG torch for their specific application. Kit converts into 28 different torch styles while using the A-150 and A-125 existing cable. Features collets, collet bodies, nozzles, torch heads, handle and more.

Extension Kit EK-2-25-R 25 ft. (7.6 m), rubber

Cable Covers
WC-3-10 10 ft. (3 m)
WC-3-22 22 ft. (6.7 m)
WC-3-48 48 ft. (14.6 m)

Wireless Remote Foot Control 300429
For remote current and contactor control. Receiver plugs directly into the 14-pin receptacle of Miller machine. 90-foot (27.4 m) operating range.

Wireless Remote Hand Control 300430
For remote current and contactor control. Receiver plugs directly into the 14-pin receptacle of Miller machine. 300-foot (91.4 m) operating range.

RCC-14 Remote Contactor and Current Control 151086
East/west rotary-motion fingertip control attaches to TIG torch using two hook-and-loop fasteners. Includes 26.5-foot (8 m) cord with 14-pin plug.

RCCS-14 Remote Contactor and Current Control 043688
North/south rotary-motion fingertip control attaches to TIG torch using two hook-and-loop fasteners. Includes 26.5-foot (8 m) cord with 14-pin plug.

Distributed by:



Kristian Electric Ltd.

Calgary
4215 64th Avenue SE
(403)292-9111

Edmonton
14236 121A Avenue
(780)444-6116

Saskatoon
710 46th Street E
(306)343-9111

www.kristian.ca



Miller®

The Power of Blue®